



## PocketLAN for Pocket PC Help

## Quick Start Guide

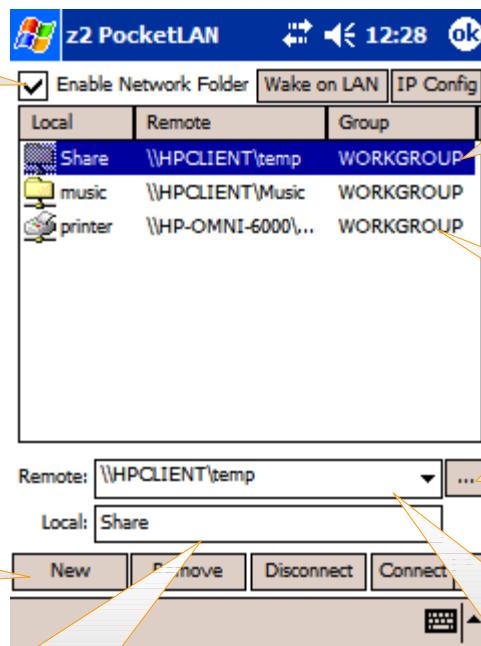
★ Before you follow the diagram to setup PocketLAN, *please make sure your Pocket PC has a unique device name on the whole network*. Click Start->Settings->System->About->Device ID to change the device name.

*Also make sure current network configuration is correct*. You can check it with File Explorer, please click Start->Programs->File Explorer->Open, enter a remote computer name on network and then click "OK". If you can not browse the remote computer, please check your network configuration.

PocketLAN v3.1 can only work on Pocket PC 2002/2003, *it does not support Pocket PC 2000 and older device*.

1. After install, click Start->Programs->PocketLAN and run PocketLAN. Click "Reset" when PL ask to reset and enable "Network Folder". After reset, please plug in your network card and run PocketLAN again.

2. After restart, this option should already be enabled



8. After connect, double click or click and hold here to browse in File Explorer. You can print plain text if the map is a network printer.

7. Double click here or click "Connect" button to make a connection.

6. To get the share folder name on your local network, click "..." button to open [Network Browse Dialog](#). If the dialog is empty, click "Refresh" button to scan remote computer names. For different subnet, please change "Subnet IP" in [Scan Network Dialog](#).

3. Click "New" button to add a new map.

4. Enter local folder name in "Local" edit box, this name will show under File Explorer "NETWORK" folder after connect.

5. Enter remote computer share folder or printer name in "Remote" edit box.

Click here to show [Wake on LAN Dialog](#). You can wake up the stand by computer in local network or through internet.

Click OK to close PocketLAN Main Dialog. PocketLAN runs on background when Main Dialog is closed.

Click here to enable/disable **"NETWORK"** folder under File Explorer. When disabled, all the mapped folder will be disabled.

Click any column sort the list from 'A' to 'Z' or 'Z' to 'A'

Click here to select a folder or tap and hold here to show the [main pop up menu](#)

Enter remote computer share folder or printer name in "Remote" edit box.

Enter local folder name in "Local" edit box, this name will show under File Explorer **"NETWORK"** folder after connect.

Click "New" button to add a new map.

Click "Remove" button to remove current selected map.

Click "Connect" button to connect current selected map.


Click here to show [IP Config Dialog](#). You can check IP Configuration, release/renew IP, ping and change IP settings with IP Config Dialog.

Double click here to make a connection, browse the folder or print text to a network printer.

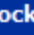
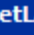
To find network resource, click "..." button to open [Network Browse Dialog](#). If the dialog is empty, click "Refresh" button to scan remote computer names. For different subnet, please change "Subnet IP" in [Scan Network Dialog](#).

Click "Disconnect" button to disconnect current selected map.


Click "\*" button to [change user name and password](#) or [default domain settings](#).



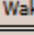
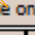
z2 PocketLAN

12:28



☒ Enable Network Folder
 

 Wake on LAN
  IP Config

Local	Remote	Group
Share	\\HPCCLIENT\temp	WORKGROUP
music	\\HPCCLIENT\Music	WORKGROUP
printer	\\HP-OMNI-6000\...	WORKGROUP

Remote: \\HPCCLIENT\temp

Local: Share

New

Remove

Disconnect

Connect

\*

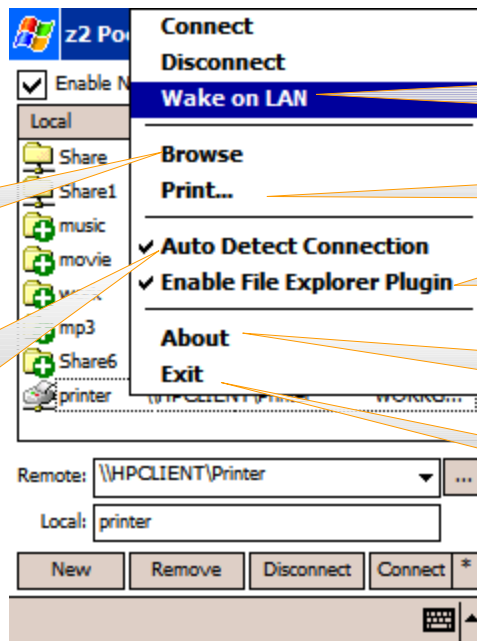


★ Sometimes browse "[NETWORK](#)" folder in File Explorer becomes very slow and ActiveSync encounters timeout error when some network resource is not available. Please enable "Auto Detect Connection" to fix the problem. Or you could manually disconnect the unavailable map.

★ When "Auto Detect Connection" is enabled, PocketLAN will periodically ping the remote computer to check its connection. When AC Power is on, PocketLAN will ping the remote computer at every 4 seconds; Otherwise every 12 seconds when using battery.

Browse selected [remote folder](#) in file explore.

Enable/disable network connection auto detect. When enabled, PocketLAN will auto connect/disconnect the mapped folder If the remote computer currently is available/unavailable through ping.



Show [Wake on LAN](#) dialog to wake up current selected computer.

Print text with [Print Text Dialog](#).

Enable/disable [File Explorer plugin](#).

Show About Dialog to check version/build number or uninstall PocketLAN.

Exit PocketLAN.



Use advanced connect dialog to:  
map network share folder which need  
different user name and password.  
Change default domain settings.  
Change group name.

Click to update group name of network resource

If you get an "access deny" error,  
after changing the user name, please  
enable this option and make the  
waiting time longer.

The dialog box is titled "Advanced Connect" and has a status bar at the top showing the time as 10:57 and an "OK" button. The main content area is divided into several sections:

- Connect to Name:** A text field containing "temp" and a path field containing "\\HP-OMNI-6000\\temp".
- Group:** A text field containing "WORKGROUP".
- Close existing connections for changing user:** A checkbox that is currently unchecked.
- Wait for SMB sessions close in seconds:** A text field containing "60".
- Change User Name & Password:** A section with two text fields: "User:" and "Password:".
- Domain Settings:** A section with two text fields: "Default Domain:" containing "SOLAR" and "Primary Controller:".
- Accept Clear Text Password:** A checkbox that is currently unchecked.
- Network resource type:** Two radio buttons: "Network Folder" (selected) and "Network Printer".

At the bottom of the dialog box are two buttons: "OK" and "Cancel".

The local and remote name

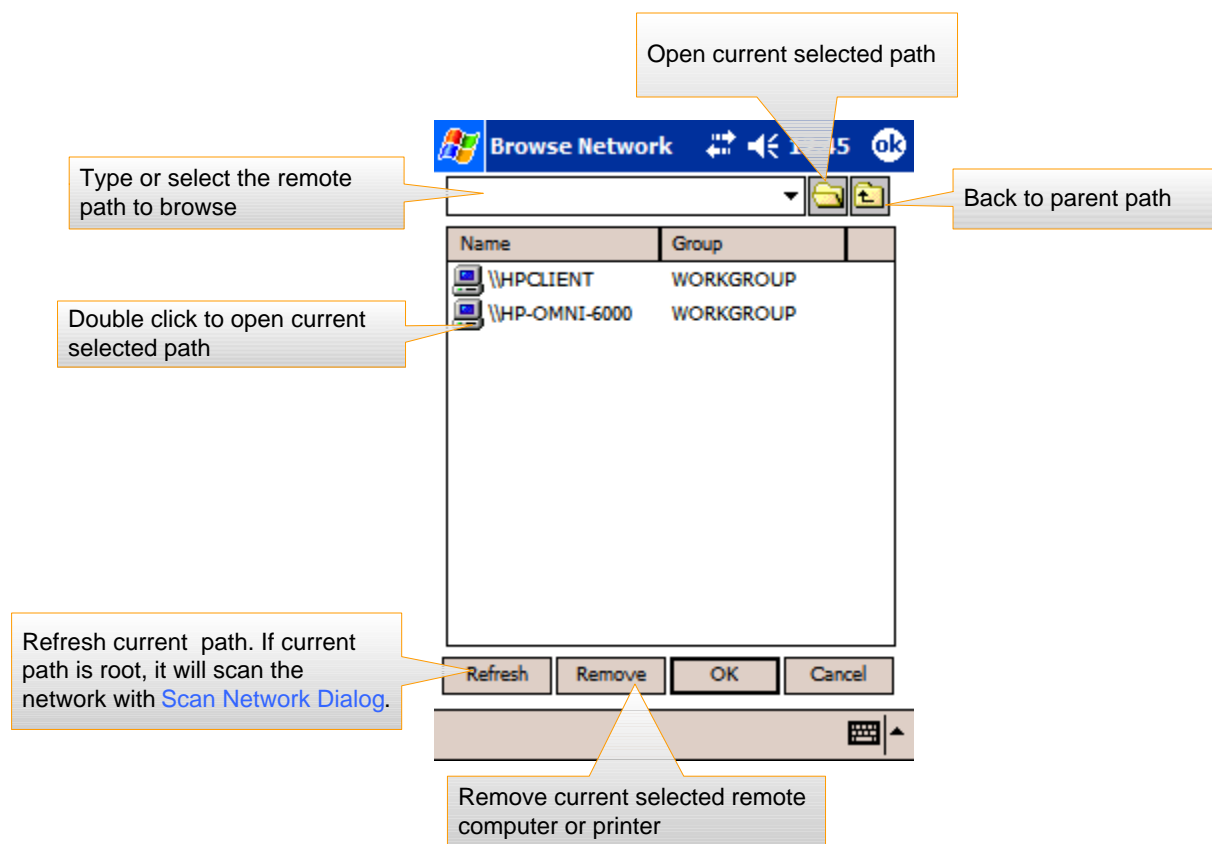
The group name of network resource

Change user name and  
password here

Change Domain Settings here

Change network resource type  
here

★ How to browse Network to get share folder or printer?  
If the dialog is empty, click "Refresh" button to scan remote computer names. For different subnet, please change "Subnet IP" in Scan Network Dialog.





★ For different subnet, please change the IP address in "Subnet IP:" field.  
If the subnet has more than 254 computers, for performance issue, PocketLAN will only scan the IP range from xxx.xxx.xxx.1 to xxx.xxx.xxx.254.

Select the network card

Show the count of computers found.

To scan different subnet, please change this IP address.

Remove all existing computer names and add current selected computers

Keep the existing computer names and insert current selected computers

Click "Scan/Stop" button to scan the network or stop current scan

Click "Select All" button to select all computers found.

Name - 2	Group	IP Address
\\HP-OMNI...	WORKGROUP	10.0.0.101
\\HPCCLIENT	WORKGROUP	10.0.0.100

☐ Remove old names and add selected

☒ Keep old names and insert selected

Stop Select All OK Cancel



**How to get new IP address?**

Please click "IP release" button to release IP , then click "IP renew" to get new IP. You also can change the IP address by clicking the "Settings" button.

The screenshot shows the 'IP Config' dialog box with the following fields and buttons:

- Network Card:** NE20001-NE2000 Compatible Ethernet Driver (Selected)
- MAC Address:** 00-C0-1B-
- NIC Vendor:** SOCKET
- IP Address:** 10.0.0.102
- Gateway:** 10.0.0.1
- DNS:** (Empty)
- DHCP:** 10.0.0.1
- WINS:** None
- Subnet Mask:** 255.255.255.0
- Buttons:** Settings, IP Renew, IP Release, Ping..., Scan...

Callouts and their corresponding actions:

- Select the network card:** Points to the dropdown menu.
- Refresh current IP config info:** Points to the refresh icon (circular arrow) next to the network card dropdown.
- Change IP address of current network card:** Points to the 'Settings' button.
- Renew IP address:** Points to the 'IP Renew' button.
- Open Ping Dialog:** Points to the 'Ping...' button.
- Open IP Scan Dialog:** Points to the 'Scan...' button.



### How to ping?

Please enter or select IP address, remote computer name or URL in the "Addr:" field, then click "Ping" button.

IP address, remote computer name or URL

Enable/Disable host name, MAC resolve

Show remote computer name, URL or IP address

Show the MAC address and NIC Vendor

Show ping result here

The screenshot shows the 'Ping' utility window. At the top, there's a title bar with the Windows logo and the text 'Ping'. Below the title bar, there's a status bar showing a speaker icon, the time '1:15', and an 'OK' button. The main area contains several fields and controls: 'Addr:' with a dropdown menu showing '10.0.0.100'; a 'Ping' button; a checked checkbox for 'HPCLIENT' with a dropdown showing '00-02-3F-' and a text field showing 'Compal'; a 'Size:' dropdown set to '32 bytes'; a 'Timeout(s):' spinner set to '1'; a 'Loop' radio button; a 'Count:' spinner set to '4'; a 'Packets' section with 'Tx: 4', 'Rx: 4', and 'Lost: 0'; a 'Round Trip Time (ms)' section with 'Min: 3', 'Max: 4', and 'Avg: 3'; and a large text area at the bottom showing the ping results: 'Reply from 10.0.0.100: bytes=32 time=3ms TTL=128', 'Reply from 10.0.0.100: bytes=32 time=3ms TTL=128', 'Reply from 10.0.0.100: bytes=32 time=4ms TTL=128', and 'Reply from 10.0.0.100: bytes=32 time=3ms TTL=128'. Callouts point to these various elements with descriptive text.

Packets		
Tx: 4	Rx: 4	Lost: 0

Round Trip Time (ms)		
Min: 3	Max: 4	Avg: 3

```
Reply from 10.0.0.100: bytes=32 time=3ms
TTL=128
Reply from 10.0.0.100: bytes=32 time=3ms
TTL=128
Reply from 10.0.0.100: bytes=32 time=4ms
TTL=128
Reply from 10.0.0.100: bytes=32 time=3ms
TTL=128
```



## PocketLAN for Pocket PC Help

## Scan IP

★ For different subnet, please change the IP address in "Subnet IP:" field.  
If the subnet has more than 255 computers, for performance issue, PocketLAN will only scan the IP range from xxx.xxx.xxx.1 to xxx.xxx.xxx.255.

★ If the column of NIC Vendor is empty, you can add new vendors info by yourself. Just open and edit the file "MAC.TXT" in PocketLAN installation path.

Select the network card

Scan IP

Scan Network: CW981-AMBICOM-WL1100x 802.11b

Subnet IP: 10.0.0.104

To scan different subnet, please change this IP address.

Name - 5	IP Addr...	MAC Add...	NIC Ve...
YEJOR...	10.0.0.105	00-A0-F8-...	SYMBOL
HP-OM...	10.0.0.101	00-00-86-...	Megahert
HPCLIE...	10.0.0.100	00-02-3F-...	Compal
?Linksy...	10.0.0.99	00-04-5A-...	Linksys
?Linksy...	10.0.0.1	00-06-25-...	Linksys

Click one of these titles to sort the column from 'A' to 'Z' or 'Z' to 'A'

Double click here to ping this IP address

Scan OK Cancel

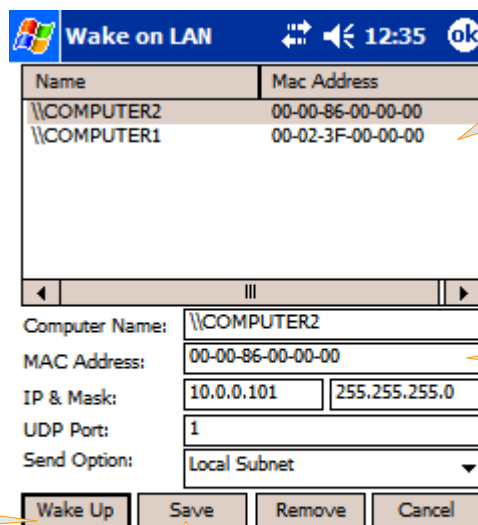
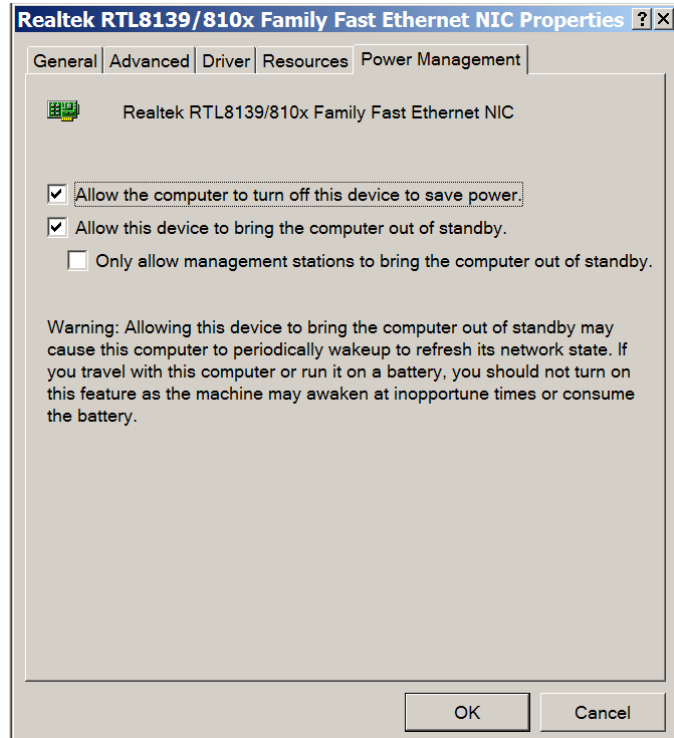
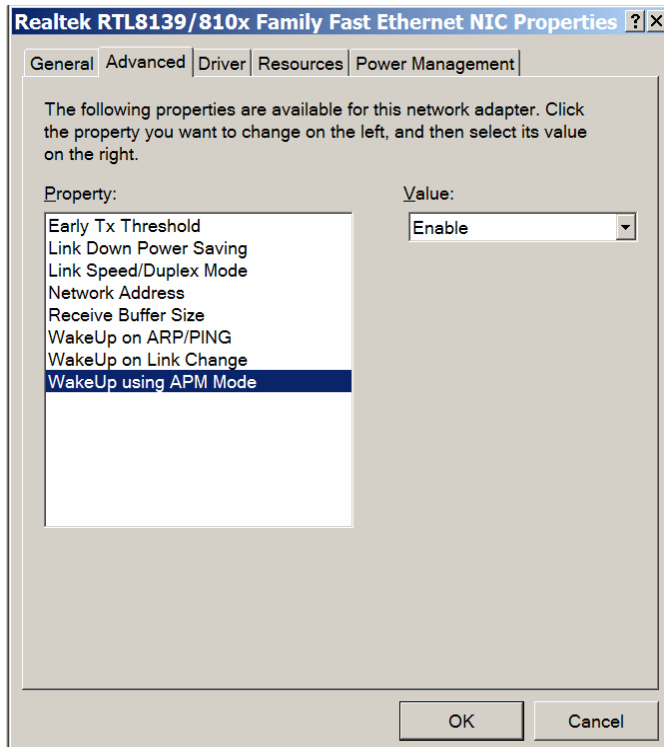
Click "OK" ping current selected IP address



## PocketLAN for Pocket PC Help

## Wake on LAN

★ Please make sure the network card of the computer supports "Wake on LAN" (WOL) and "Wake on LAN" is enabled in BIOS and Windows network card settings. For windows XP and 2000, to verify these settings, click desktop computer->Start->Control Panel->Network Connections->Local Area Connection->Properties->Configure...->Advanced and Power Managements. To wake up the computer through internet, you also need to configure the internet gateway router.



Select one or more computer to wake up

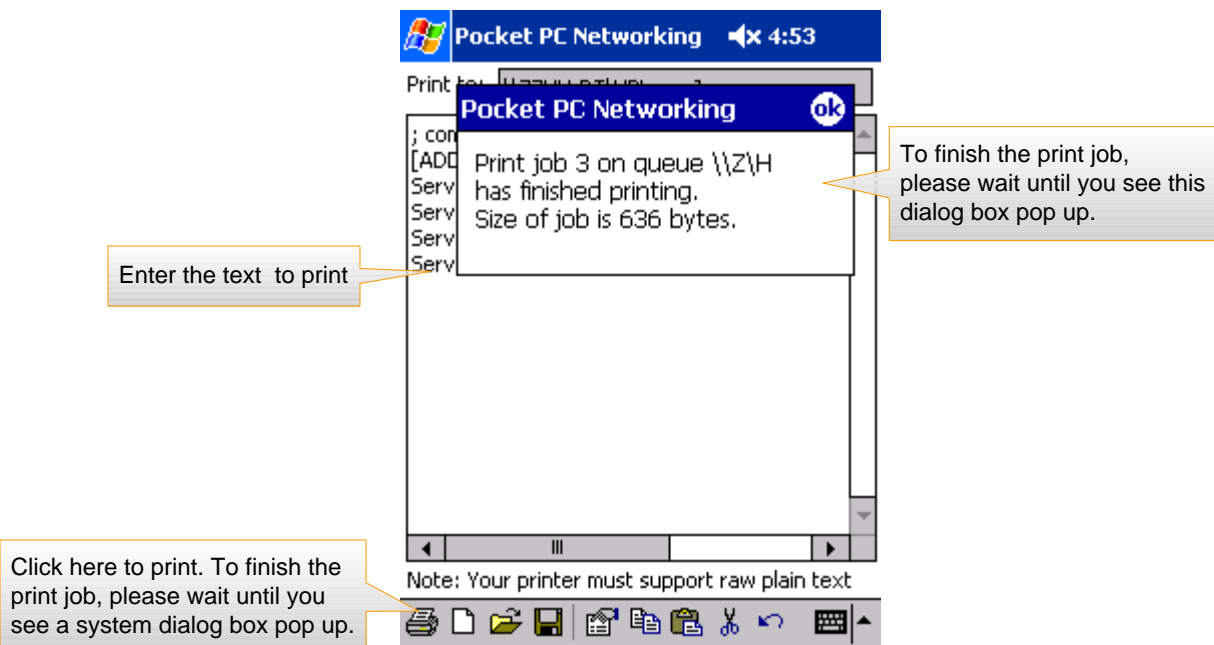
Change the settings of Wake on LAN here

Click and send Magic Packet to wake the selected computers

Click save to save the changes of current selected computer

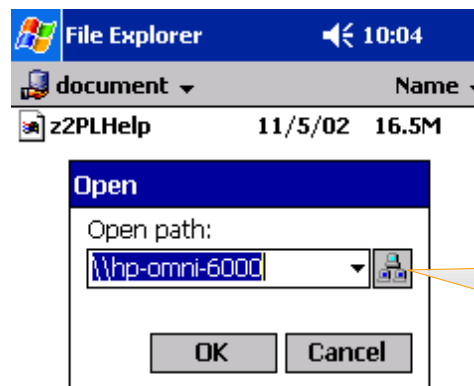


★ You can copy text from other application and paste it to the *Print Text* Dialog.  
*Your network printer must support raw plain text.*





★ Can not remember the network path?  
z2 PocketLAN File Explorer Plugin let you browse  
the network without typing any network path.  
You can enable File Explorer Plugin with PocketLAN  
[Pop Up Menu](#).



Click this PocketLAN File Explorer  
Plugin button to browse network with  
PocketLAN [Network Browse Dialog](#).



Click here to show Network Open  
Path dialog in File Explorer.

